

**SIP**<sup>TM</sup>  
SIMPLEX IDEAL PEERLESS



## THE IDEAL 6000<sup>TM</sup>

THE WORLD'S FASTEST, QUIETEST AND MOST PRECISE BED KNIFE GRINDER

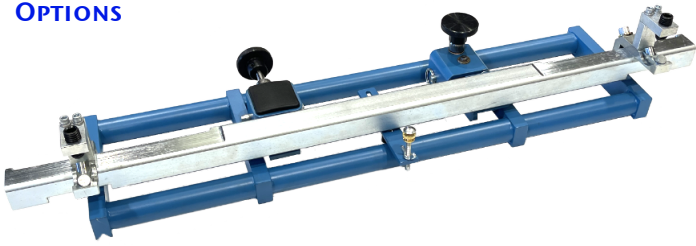
**OUR UNIQUE FIXED DUAL GRINDING HEADS** reduce set up and change over time, eliminate interference between the grinding head and bed knife, and allow you to grind the top and front faces at the same time.

**THE GRINDER IS FULLY ENCLOSED** to virtually eliminate dust and noise. The door easily opens and closes.  
**DISTORTION FREE MOUNTING** with your choice of bottom support or pivot bolt support pallets.

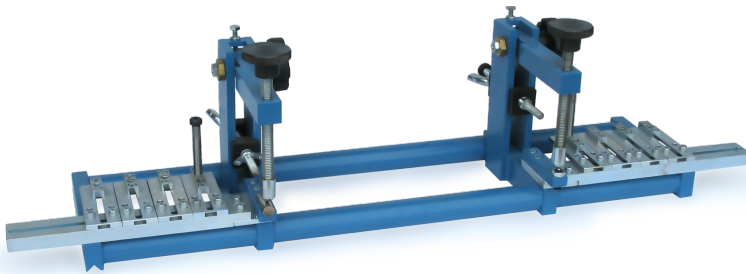
# THE IDEAL 6000™

## THE WORLD'S FASTEST, QUIETEST AND MOST PRECISE BED KNIFE GRINDER

### OPTIONS



60000-98 Adjustable V-Support Pallet gives you all of the benefits of the standard v-pallet with the added capability to do touch-touch grinds.



60000-92 is the Bottom Support Pallet uses a shaft and ball (line and point) which defines a plane, to support the bed knife without distorting it and aligning the bottom of the bed knife to the carriage travel within .002 inches. Shown above with the optional Pin Alignment System.

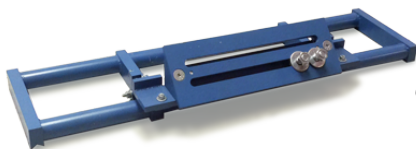
60300-02 Pin Alignment System provides a series of nuts that can be set for different bed knives. Precision pins are mounted in the nuts. This will automatically align the front face of the bed knife to the pivot mounting bolt to within .002 inches. It takes 30 to 60 seconds to load and align the bed knife.



77365-01 Calibration Bar is ground flat and parallel to within .001 inches and can be used to check the quality of your grind.



79028-03 Ceramic Stone will grind bed knives in half the time as a standard aluminum oxide stone.



60530-01 Chipper Blade Pallet



77565-02 Extended 10 Year Warranty



77020-05 Coolant for Mist System

### FEATURES

- The table is a single piece, welded from 1/4 inch thick steel plate and precision machined.
- The track shafts are induction hardened, turned, ground, polished, and hard chrome plated for maximum durability and precision.
- The door completely encloses the grinder and has polycarbonate panels for good visibility and opens and closes easily.
- Dual grinding heads eliminate change over from front to top face and help maintain consistency between bed knives. The motor for the top face head is under the grinding wheel to eliminate interference with awkward bed knives.
- Dual 3/4 horsepower, totally enclosed-fan cooled grinding motors provide all the power you will need and are maintenance free.
- Single point in-feeds eliminate alignment errors caused by dual end in-feed systems.
- Dual diamond dressers make it fast and easy to keep the grinding wheel dressed.
- Grind angles are set with pins for easy set up and maximum repeatability.
- Maintenance free pneumatics include a factory lubricated and sealed cylinder and a self draining filter regulator.
- The bottom support pallet is a line and a point. This defines a plane which provides distortion free bed knife mounting.
- The v-support pallet grinds both the front and top faces parallel to the mounting bolts.
- The coolant mist system gives optimum cooling while using once through, always clean coolant. This eliminates disposal problems, odor and infections.
- The control panel is convenient, easy to use and out of the way.
- Adjustable legs let you set the grinder to a comfortable operating height.

### SPECIFICATIONS

- 75 in wide x 40 in deep x 46-58 in high (191 cm x 102 cm x 117-148 cm)
- 40 in carriage travel (102 cm)
- 1,300 pound shipping weight
- Two 6 x 1-1/2 x 1-1/4 cup grinding wheels
- Two 3/4 horsepower, totally enclosed fan cooled grinding motors
- Maintenance free pneumatic carriage drive
- All welded steel table
- Single point grinding wheel in-feeds
- Induction hardened, ground, polished, and hard chrome plated track shafts
- Chrome shaft and ball or v-pallet support the bed knife without distorting it
- Mechanical clamps
- Fully enclosed with polycarbonate panels and easy open door
- Integrated coolant mist system

**SIP**  
SIMPLEX IDEAL PEERLESS

800-888-6658

sales@sipgrinder.com

20044-02 11/7/2023